

ADVANCED WIND BAFFLE WB-SD / WB-RE

DESIGNED FOR P-SERIES PUY OUTDOOR UNITS ONLY

Job Name:	Date:
System Reference:	



GENERAL FEATURES

- Allows P-Series outdoor units to operate to -20° F DB cooling except for PUY-A42NHA6.
- Prevents wind from reversing outdoor fan rotation.
- Durable, low maintenance construction.

PUY-A42NHA6 does not operate to full capacity below 0° F (Requires WB-PA2 (x2) for performance below 23 ° F)

PLEASE NOTE

- Installation location will dictate Advanced wind baffle requirements. Refer to the installation manual for additional details.
- Advanced Wind Baffles should be installed to prevent any wind blowing directly into the unit.
- Front Wind Baffle (WB-PA1, WB-PA2) is also required for -20° F operation.

MODEL REQUIRED PER OUTDOOR UNIT

UNIT MODEL	Type and Quantity					
	WB-SD1	WB-RE1	WB-SD2	WB-RE2	WB-SD3	WB-RE3
PUY-A12NHA6	1	1				
PUY-A18NHA6	1	1				
PUY-A24NHA6			1	1		
PUY-A30NHA6			1	1		
PUY-A36NHA6			1	1		
PUY-A42NHA6					1	1

SPECIFICATIONS

		WB-SD1	WB-RE1
Exterior	Color	Ivory	
	Surface Treatment	Polyester Powder Paint	
	Material	Alloy hot-dip zinc coated carbon steel sheet	
Weight (Lbs)		6	10

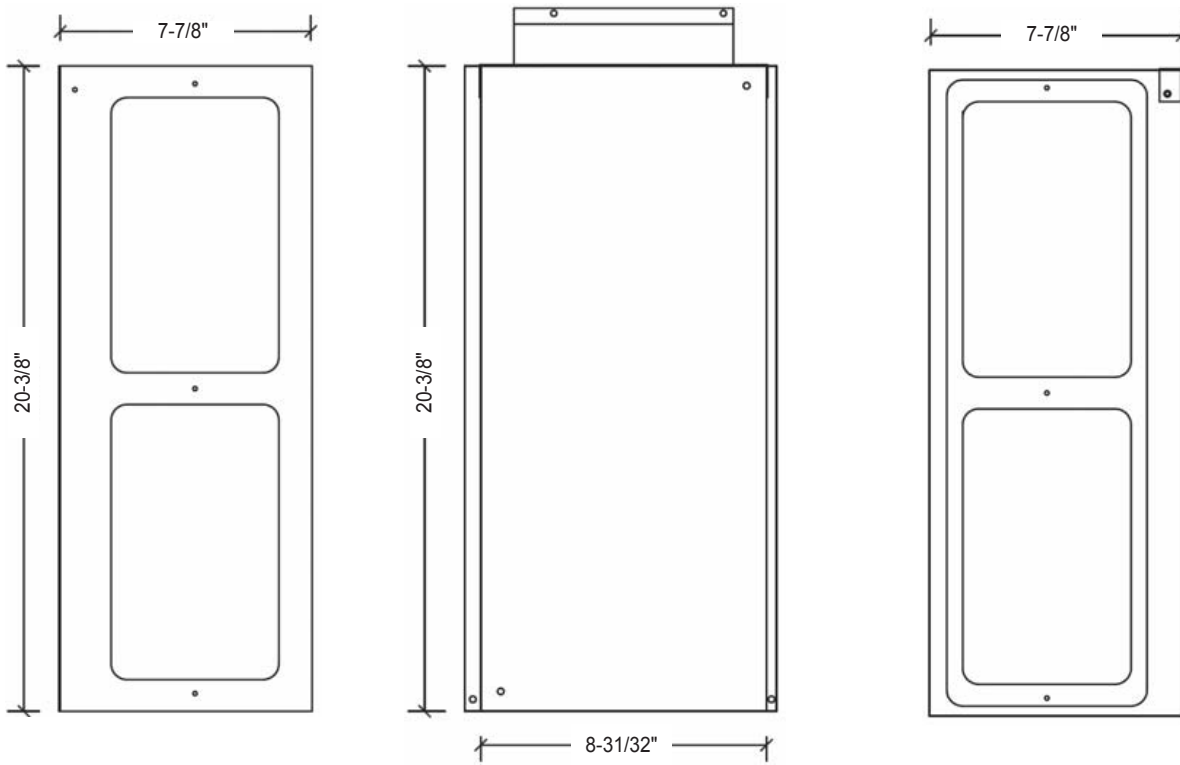
		WB-SD2	WB-RE2
Exterior	Color	Ivory	
	Surface Treatment	Acrylic resin coating	
	Material	Alloy hot-dip zinc coated carbon steel sheet	
Weight		10	18

		WB-SD3	WB-RE3
Exterior	Color	Ivory	
	Surface Treatment	Acrylic resin coating	
	Material	Alloy hot-dip zinc coated carbon steel sheet	
Weight		15	32

DIMENSIONS: WB-SD1 and WB-RE1

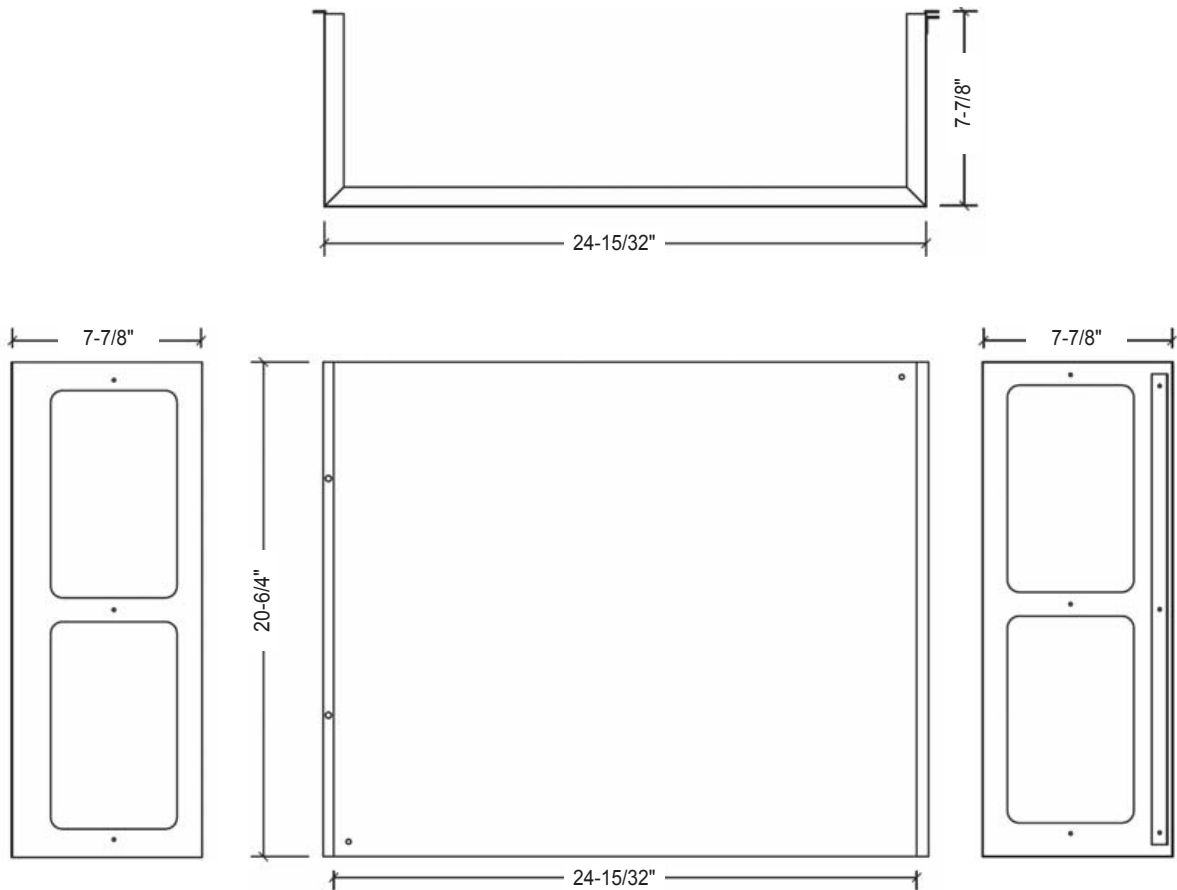
WB-SD1

Unit: inch



WB-RE1

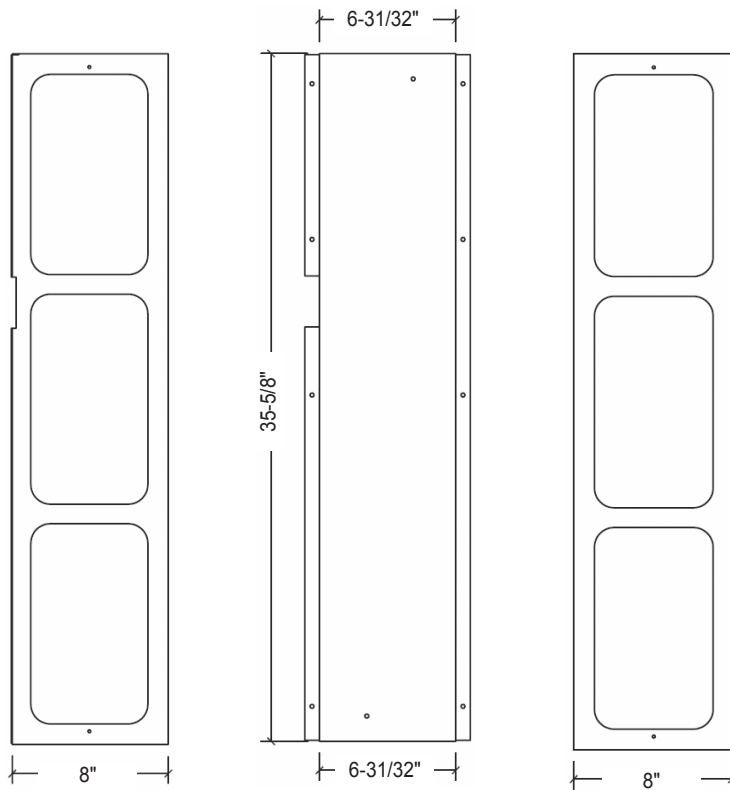
Unit: inch



DIMENSIONS: WB-SD2 and WB-RE2

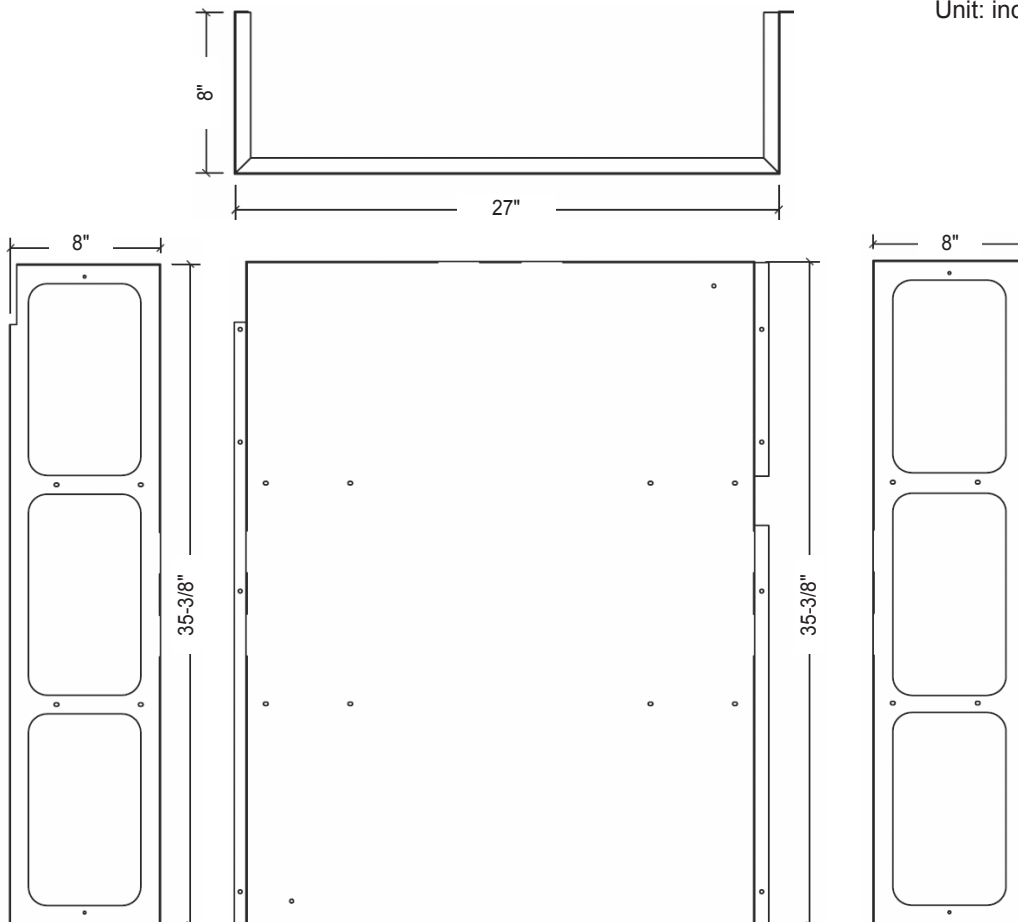
WB-SD2

Unit: inch



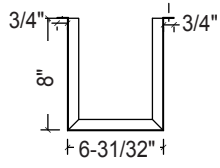
WB-RE2

Unit: inch

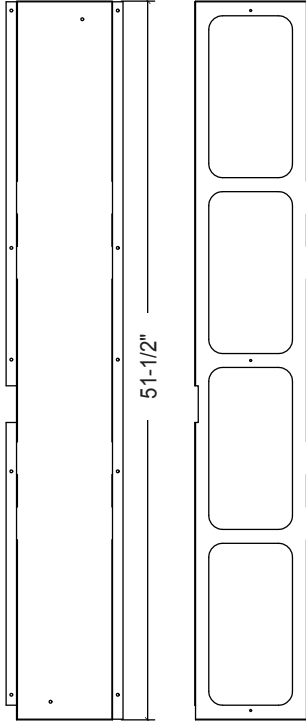


DIMENSIONS: WB-SD3 and WB-RE3

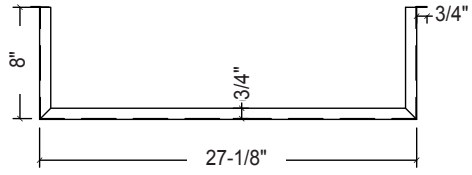
WB-SD3



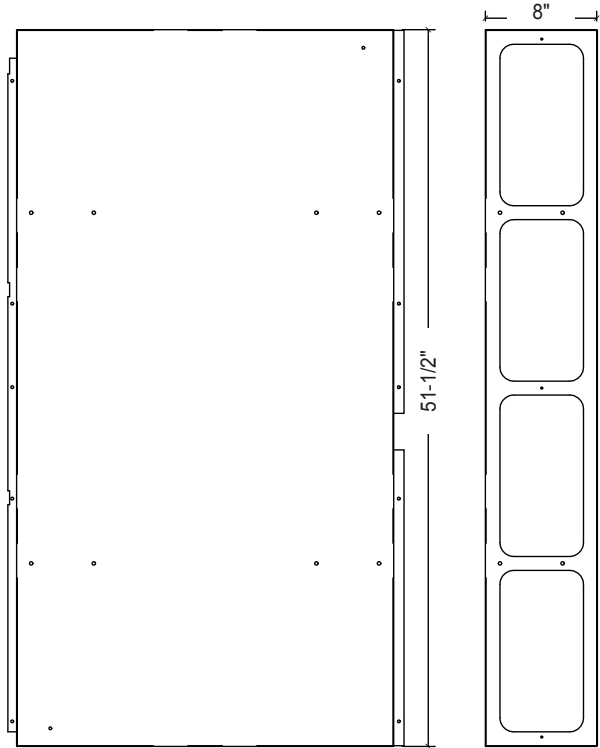
Unit: inch



WB-RE3



Unit: inch



Manufactured for MITSUBISHI ELECTRIC US, INC.

1340 Satellite Boulevard, Suwanee, GA 30024

Toll Free: 800-433-4822 www.mehvac.com